



Index



Notice	I
Pictures and functions of the Player	1-15
The Presented Accessories with the Player	3
MMC/SD Function	4
LCD	5
Open and Close the Player	6
Play the Music	7
Menu Function in the Play Mode	9
Recording Operation	11
Play Record	13
Set Recording Source	15
Set Recording Sampling Frequency	16
FM Function	17-19
Delete Files	19-20
MP3 Setting	21-25
Set the MP3 Equalizer	21
Set the Loop Mode	23
Use the Blue Backlight	24
Adjust LCD Contrast	25
MP3 Additional Function	26-29
Adjust the Automatically Closing Time	26
Repeating Function	27
View the Using Volume of the Player	28
The USB Connection	29



Index



The Player Management Software	30-39
System Requirement for the Software	30
Installment Steps of the Management Software	31
Transfer Files to the Player	32
Files Uploading	34
Format the Memory of the Player	36
Delete Files	38
Refresh the USB Connection	39
Malfunction Diagnosis	40-45
Malfunction Diagnosis	40
Problem Solution	42
Technical Specifications	45

**Notice**

- ◆ If you plan not to use the player, please take out batteries to avoid malfunction by soaking and eroding of batteries.
- ◆ Don't use the player in very hot, cold, dusty, or wet environment.
- ◆ Unlock the locked switch before using it
- ◆ Don't let the player fall down while being used because the falling may causing nick

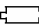
The life of batteries:

(Time unit: hour)

Battery	Using life
No 7 lithium battery (Closed the backlight)	12

*The life of batteries may be different because of using condition, manufacturer and manufacturing time.

*Please replace your batteries under the following batteries

- The icon  gets bright.
 - LCD shows Low power.
 - Operating button stroke has no response. When taking out batteries and installing it again, there is still no response.
 - To avoid static when using, please notice the following.
- If possible, please avoid to use it in rather dry environment.
 - Please check whether the batteries are used up when the player stops under normal operation



Notice



I



◆ The face



The wheel includes fast on, back, Volume +, Volume-, Menu

◆ The flank





◆ **The Presented Accessories with the Player**



Installing CD



USB line



Earphone



Manual/ guarantee



AAA battery



line-in

◆ **MMC/SD Function**



MMC

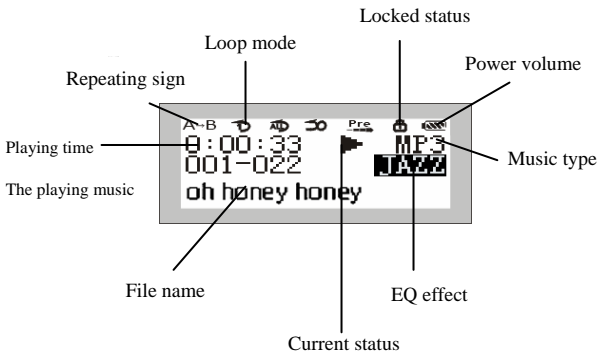


Usage

Notice: the product supports the standard MMC/SD. Pay attention to the direction of card plugging.



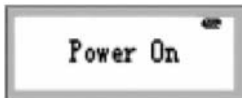
◆ LCD



The loop mode includes Repeat Track, Repeat all, Shuffle, Preview mode, normal mode (normal mode is not shown in the picture)

◆ Open and Close the Player

When you open the player, you only need to press the PLAY/STOP button. After 2 seconds, the beautiful blue picture will present before you.



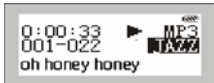
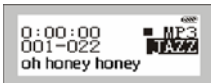
when the player is in playing or stopping, press PLAY/STOP until the following picture shows, then you player will close. Such closing mode will save the parameters while under power shutting the parameters will not be saved.





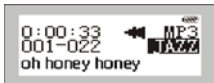
◆ Play the Music

1. When you press PLAY/STOP, you will see the following picture showing the player in music mode with the lowest row present the music name.



2. When you press PLAY/STOP again, the picture is as the above and right picture. The left shows the present music serial number and playing time, and the low shows the music name.
3. If you want choose to the next or the former music, dial the wheel button up or down. And in playing, press PLAY/STOP to stop the playing.
4. To close the player, press PLAY/STOP for 3 seconds
5. When the player is in playing or stopping, you can press VOL+ and VOL- to adjust volume. Then the volume in the picture will change. To press VOL once, the volume will increase or decrease a level. The adjusting range of volume is 32 levels.

6. In Music mode, the present music will be fast on or fast back when you press the wheel button long enough.



7. Pressing PLAY/STOP long enough will close the player with all parameters saved.

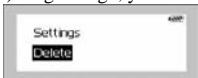
Notice:

When the player is running, the battery volume may flop. The reason is that different power in playing will cause the batter volume librating.



◆ Menu Function in the Play Mode

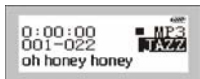
1. Press PLAY/STOP to open your player.
2. Press the menu button (the button in the midst of the wheel button) long enough, you will see all the item in the menu



Music
Voice
FM Tuner
Settings
Delete
Memory Info
Record
Return

You can choose each item in the above table by pressing the wheel button up or down. Pressing the mode button in the midst button will go into menu.

- *Choose Music* to go into music playing mode. In such status, you can choose music to play.



- *Choosing Voice* to go into recording file playing mode. In such status, you can choose WAV file to play. In such status, you still can choose the corresponding function in the same menu, for example, the Music menu item.





- Choose *Record* item to enter recording interface. If recording setting is set to MIC, the record format is WAV. If the record settings is set to Line-in, the format is MP3.



- Choose *Deleting* to enter file deleting interface. There are two items, Music and /Voice.



Music
Voice
Return

Choose Music to delete music files. And choose Voice to delete record files.

- Choose *Settings* item to enter parameters setting menu.



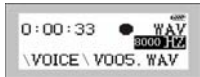
EQ
Repeat
LCD Contrast
Auto OFF
Record source
Encode Bitrate
Backlight
Return



◆ Recording Operation

You have two ways to begin recording.

1. Recording by one button
 - 1) Press PLAY/STOP to open the player.
 - 2) Press A-B/REC long enough to record directly.



On the interface the player shows the present recording file/total recording file amount, recording time, left recording time, the present recording file name and recording sampling frequency. As the above picture shows, the present recording time is 8 seconds and sampling frequency is 44.1KHz.

- 3) You can press PLAY/STOP to stop recording. After that, the player is back to Music mode, and you can play the recording file.
2. Choose to record in the menu
 - 1) Press the mode button (the medial button of the wheel) to enter the menu.
 - 2) Choose the items of Record by pressing the wheel up or down).



- 3) Press the mode button to enter recording interface directly.



The definition of recording interface is the same to the former.

- 4) Press Stop to stop recording and back to Voice mode. Press Mode to back to Music mode.

◆ **Play Record**

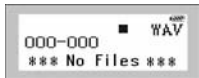
1. Press PLAY/STOP to open the player. Press the mode button, then you will see the pop menu.



2. Choose Voice in the menu, you will enter record playing mode



3. If there is no recording files or it's the first time to enter, No Files interface will appear.
4. Choose the recording file that you want to play by pressing the wheel button up and button, and press PLAY/STOP to play the record. The playing picture is as the following. If there is no recording files, you will see the following interface:



5. At present, when you press the mode button (the medial button in the wheel), you also can enter the function menu to finish all choosing and the settings.
6. After finishing recording, you can press PLAY/STOP

quickly to stop recording and back to the recording interface. Then you can choose the Music item in the menu to quit the recording interface and enter MP3 mode. Or you can press the mode button long enough to back to the Music mode.



◆ Set Recording Source

At present, you can record with different ways, for example by the microphone or the line-in.

1. Press PLAY/STOP to open the player.
2. Press the mode button (the medial button in the wheel) to open the menu.
3. Press the wheel up or down to choose the Settings item in the menu.
4. Press the mode button to choose the Rec Source item.
5. Press the mode button to enter Rec Source setting menu as the following picture:



At present, two items, MIC and Line in cable, are offered to choose.

If you choose MIC, the record will be got from outside. If you choose Line in cable, the record will be got from the inner line in cable.

Notice: the power will be consumed greatly by the way of Line in cable. So suggest users to do the Encode operation when the power is plenty to avoid the break-off or shutting-down in low power.



◆ Set Recording Sampling Frequency

When you record by the microphone, you may adjust the recording sampling frequency of the file.

1. Press PLAY/STOP to open the MP3 player.
2. Press the mode button (the medial button of the wheel) to open the menu
3. Press the wheel up or down to choose the Setting item in the menu.
4. Press the mode button to choose the Record Sample item.
5. Press the mode button to enter the Record Sample setting menu as the following picture:



You can choose 8000Hz, 11025Hz, 16000Hz, 22050Hz, 32000Hz, The higher the frequency, the better the sound quality is, and the more space it takes.

Notice: there may be faint sound if no sound is in Line in cable. But this has no effect on the quality of recording music.

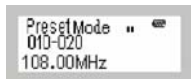
◆ **FM Function**

● *Adjust frequency*

1. Press PLAY/STOP to open the player.
2. Press the mode button to open the menu as the following picture:



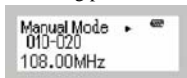
3. Use the Next/Last button in the wheel to choose the FM Tuner item.
4. Press the mode button to enter Preset mode as the following picture:



The Preset mode:

This mode has set 20 fixed channel. When you first enter the mode, the player will automatically search the channel. After searching, you can choose each channel with the Next/Last button.

5. Press the mode button again to enter the Manual mode as the following picture:



The Manual mode:

In the interface, you can adjust manually with the Next/Last button. Dialing once will change 1000Hz. Pressing the Next/Last long will change 1000Hz continuously.

If you want to save the frequency that you adjust manually, you can press the A-B button for a short time. Then, the frequency will be saved in the Preset mode o listen to in future.

● **Recording**

You can record in Manual and Preset mode. Press A-B to enter the recording interface as the following picture:



Then, the program which you receive will be recorded into MP3 files. Press PLAY/STOP to stop recording.

Press the mode button to quit FM adjusting.

Notice: the control of Volume + and – is still useful, but no status is shown.

◆ Delete Files

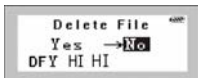
To delete the files in the player, you can use the menu in the player or the management software we present. Delete files according to the following steps:

1. Press PLAY/STOP long enough to open the player.
2. Press the mode button to open the menu.
3. Choose the Delete item by the Next/Last button.
4. Then you can choose to delete music or voice files as the following picture:



Music
Voice
Return

5. If choose Music, you will enter the music deleting interface as the following picture:



If you don't want to delete the current music, you can choose the No. By the Next/Last button. Press the mode button to enter the music that you want to delete. Then choose Yes and press the mode button to delete the music. After finishing deleting, the player will back to the deleting mode automatically, and you can continue deleting the file.

If you want to quit deleting, press the mode button long enough.

6. If you choose Voice, you will enter the voice deleting interface as the following picture:



If you don't want to delete the current music, you can choose the No. by the Next/Last button. Press the mode button to enter the music that you want to delete. Then choose Yes and press the mode button to delete the music. After finishing deleting, the player will back to the deleting mode automatically, and you can continue deleting the file. If you want to back to the Play mode, press the mode button long enough.

If you want to quit the deleting menu, you can choose Return, then press the mode button to quit the Play mode.



◆ Set the MP3 Equalizer

To enjoy the music best, you can choose different equalizer mode according to different music type.

1. Press PLAY/STOP to open the player.
2. Press the mode button to open the menu.
3. Choose the Settings item.
4. Choose EQ menu.
5. Choose each item by the Next/Last button.

The equalizer has five modes, Normal, Rock, Jazz, Classical and Pop. To choose EQ will pop the list as the following picture:



JAZZ
CLASSIC
ROCK
POP
NORMAL
Return

You can choose each mode by the items of EQ menu. The Jazz mode makes you feel perfect jazz music. And the Classic mode makes you enjoy perfect classic music. The Rock mode makes you feel perfect rock music. The Pop mode makes you feel perfect pop music. And the Normal mode just keeps the inward feature without been optimized.



6. If you don't want to change the current settings, choose Return to quit the menu.

After you finish the setting, the EQ mode name will show in the playing interface as the following picture:



To quit the setting interface, press the mode button long enough to back to the Music mode.

7. In the Play mode, you can adjust EQ by pressing the EQ button briefly.



◆ Set the Loop Mode

When you play the music, you may need different loop mode. You can change the loop mode of the player.

1. Press PLAY/STOP to open the player.
2. Press the mode button to open the menu.
3. Choose the Settings item.
4. Choose the Repeat menu.
5. In the menu, choose the repeating item by the Next/Last button to pop the following picture. These items will change the loop mode. They are Shuffle, Normal, Repeat all, Repeat Track.



Shuffle
Normal
Repeat all
Repeat Track
Preview
Return

Their function is as the following:

Repeat Track: a certain piece of music plays loop.

Repeat all: all music plays continuously and orderly until you do other operation.

Shuffle: play at shuffle without order.

Normal: all music plays orderly once and the player stops playing.



◆ Use the Blue Backlight

The blue background is attracting. There you can set the blue background open time as your like.

1. Press PLAY/STOP to open the player.
2. Press the mode button to open the menu.
3. Choose the Settings item.
4. Choose Backlight item.
5. Press the mode button to enter the Backlight menu as the following picture.



You can choose to close the Backlight. And you can choose 5s, 10s, 15s, 20s and all. When press the button each time, the backlight will exist for the corresponding time.

Disable mean the backlight will start whenever. The choice can prolong the life of battery.

These items, 5s, 10s, 15s and 20s, set 5 s, 10 s, 15 s and 20 s. When press the button each time, the backlight will exist for the corresponding time.

All means the backlight is always open. (The way will decrease the life of your battery)

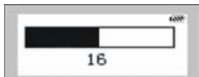
Press the mode button to quit the Settings interface and back to the Music mode.



◆ Adjust LCD Contrast

The LCD Contrast is different with the weather changing. There you can set the LCD Contrast as your like.

1. Press PLAY/STOP to open the player.
2. Press the mode button to open the menu.
3. Choose the Settings item.
4. Choose LCD Contrast item.
5. Press the mode button to enter LCD Contrast setting interface as the following picture.



You can press the Next/Last button to change the contrast. When the contrast meet your demand, press the mode key to enter and back to Display menu. The contrast includes 32 levels.

Press the mode button to quit the Settings interface and back to the Music mode.



◆ Adjust the Automatically Closing Time

You can set different closing time according your like.

1. Press PLAY/STOP to open the player.
2. Press the mode button to open the menu.
3. Choose the Settings item.
4. Choose Power Savings menu.
5. Press the mode button to enter the automatically closing time setting menu as the following picture:



You can choose the five items, Disable, 1 Min, 2 Min, 5 Min and 10 Min. Choose the item that you need by the Next/Last button. Press the mode button to enter and back to the menu mode. If you don't change the settings, press the mode button long enough to back to the music mode.

If the setting is Disable, the player can't close automatically whatever under Stop or Pause mode.

If the setting is 1 Min, 2 Min, 5 Min or 10 Min, the player will close automatically after the corresponding minutes under Stop or Pause mode.

If you want to quit the Settings item, press the mode button long enough to back to the Music mode directly.



◆ Repeating Function

When you need to listen to some segment repeatedly, you can use this function. Press the A-B button to choose the segment (the function can be as the repeater in English study).

1. Press A-B once in playing to set the beginning point A.
2. After a while, you press again to set the ending point B. After setting the B point, the player begins to play the repeated segment.
3. In playing, press A-B or Next/Last to choose another music to cancel A-B. The picture is as the following:



Setting A



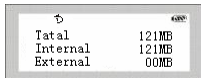
Setting B



◆ View the Using Volume of the Player

You can view the version number, the volume of the player and the using volume.

1. Press PLAY/STOP to open the player.
2. Press the mode button to open the menu.
3. Choose the About item by the Next/Last button. Press the mode button to enter, then you can view the using volume and the general volume as the following picture:



↵	6.00
Tatal	121MB
Internal	121MB
External	00MB

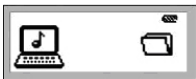
Notice: if the general volume and the left volume are not correctly shown in the player, please format the player again with the management software to insure the correct showing.



◆ The USB Connection

The player can transfer music files by the USB.

1. Check the USB in your computer. (Refer to the manual of your computer)
2. Connect the USB port of the player with that of PC. (The added USB line can also be used)
3. After the USB port is connected, a sign will be shown on the player as the following picture.
4. If you connect the player with PC for the first time and you have installed the attached software in your computer, PC will find the new device. If you have not installed it, please installed it first and connect again.



◆ System Requirement for the Software

▲ It's very important to install the management software before the connection between the player and PC.

Set the installing CD into the CD-ROM of PC, and the installing application will run automatically.

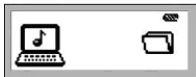
System requirement:

- ✧ IBM compatible computer
- ✧ Processor: above Pentium 166 MHz
- ✧ Operational system: the second version of Win 98, Win 2000, Win XP
- ✧ USB port
- ✧ Not less than 32MB memory (64 MB is preferred for Win 2000, XP)
- ✧ Not less than 20MB harddisk
- ✧ Not less than 4x CD-ROM
- ✧ Sound card (not necessary)
- ✧ Network environment to Internet (recommended)

◆ Installment Steps of the Management Software

1. When you set the CD into your CD-ROM, it will run automatically. In the installing process, the installment application will install Win98 driver, and click Next in the continuous windows. It will install the bottom driver of the player and the management software on PC. After finishing the installment, it will remind you to restart the system. After restarting, you will see the shortcut icon on the desktop of the computer. And you can also the player management system in the Start menu.

Before you use the player, connect the player and PC as the following picture.




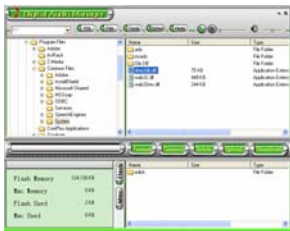
Then click the player icon on the desktop, and you will see the Chinese interface of the player management system.



◆ Transfer Files to the Player

Before transfer files to the player, please open the player and connect it to the computer.

1. Double click the icon .
2. To choose the files to transfer, first choose the file folder from the left explorer, then the right will show the files in the folder.



3. Click the download icon to download.
4. Enter and you will see the copy interface.
5. When you download other files but MP3 and WMA files, the system will create a EDISK folder in the mobile storage to keep these non music files.

6. The system can check the player automatically. Once you disconnect the player, the system will stop working.

Suggestion:

Strongly suggest users to transfer MP3 and WMA files to the MP3 folder, thus it can transfer more MP3 and WMA files. If you only copy them in the root directory, you only can copy 128 files in total.

★★★Warning:

- ◆ **Don't up-plug the player with the computer while downloading files to avoid the malfunction of the player.**
- ◆ **If the player can't work well for some reason, please take out the battery for 3 minutes and put it again. Reconnect and reformat your player.**
- ◆ **If you can't find the files you download, try to find them in the EDISK folder.**
- ◆ **In downloading, the player screen simulates the process with animation. Only the stopping of the animation on the player shows the end of the transfer because of the non synchronization between different operational system and the player. For example, in Win 98, it shows the end quickly on PC, but on the player it need to show additional time to end truly. But in Windows XP, the transferring speed of PC and the player is nearly the same. After the downloading ends, don't take the player immediately. Please attach importance on it to avoid files corruption.**

◆ Files Uploading

The player can be as mobile storage, and you can upload files to PC with the player management software. The player only upload non sound files and can't upload non sound files because of protecting music property.

1. Connect the player and PC.
2. Choose the file that you will upload.
3. Click the upload button on the interface of the management software.
4. You will see the transferring interface.



★★★Warning:

- ◆ Don't up-plug the player with the computer while downloading files to avoid the malfunction of the player.
- ◆ If the player can't work well for some reason, please take out the battery for 3 minutes and put it again. Reconnect and reformat your player.
- ◆ To protect the property, the player can't upload music files. If you choose MP3 or WMA files, the system will remind you.

◆ Format the Memory of the Player

Before formatting, please open the player and connect it with PC.

1. Run the player management icon on the desktop.
2. Click the Format button, and the Format dialog pops.



3. Choose the driver and click START. Then formatting begins.

Warning:

- ◆ **Formatting will delete all files in the storage.**
- ◆ **Don't up-plug the player while formatting, or it will cause the player lose the system files and the system can't start.**
- ◆ **Please use the formatting tool of the management software and don't use the operational system formatting. If you want to use the Format of Windows XP or 2000, you should choose FAT or FAT16 to format because at present the player does not support FAT32 and NTFS format. Or else your player can't work well, and the player will remind "Error, Reformat Media". Then you can format again with FAT or FAT16. If the player can't connect the player, please contact the agent.**

◆ Delete Files

Apart from the player, you can delete files in the player with the management system.

1. Connect the player with PC, open the player and run the management system.



2. Deleting the files you target to.
3. Click the Delete icon on the management system, then click “Enter” to delete the file. You can also choose the Delete menu item under the File menu.

Notice:

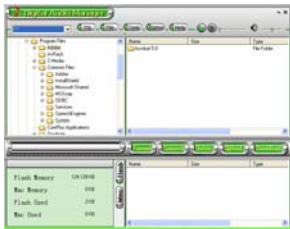
- ◆ **Once they have been deleted, the files can't be recovered.**

◆ Refresh the USB Connection

After you have connected the player and PC, to avoid the breaking off of the cable, you can click the connection icon of the player management system to refresh the connection.

◆ Memory Volume

The player management system show memory volume with figures and graphs.





◆ Malfunction Diagnosis

1. Press the Play button to get no reaction on the player.
The reason and the solution: there is no battery or the power is used up. Check whether there is battery or replace the battery. Take out the battery, and after 5 seconds, install it correctly again.
2. After opening the player, press the button to get no reaction.
The reason and the solution: the button is locked. Press the Hold button to unlock.
3. In playing files, there is no sound.
The reason and the solution: the volume is too low, and adjust the volume. Or the player is connecting to PC. Or no music files exist.
4. After connection, the player can't download music.
The reason and the solution: you may not install the player management software, or the application has been corrupted. Install the application again. Or the mainboard has no USB port. And you need upgrade your mainboard.
5. The time is shown in a mess when some music is played.
The reason and the solution: the mp3 files compressed with the VBR format will cause the time change in playing because the change of rate. But playing is no problem. You can compress them with the fixed rate format to solve the time problem.
6. Why does to up-plug the player sometimes bring out abnormality of the computer.
The reason and the solution: it's for the plugging or up-plugging of the USB. So we suggest users not to up-plug the USB while



transferring to avoid the abnormality.

7. Why is the general memory shown and claimed in fact not the same?

The reason and the solution: because the player need space to store application and Chinese character library. So the memory shown is smaller than the actual.

8. Why does the player show “Error, Reformat Media” after opening and close automatically?

The reason: If you format the player with FAT32 or NTFS in win2000 or win XP, the player can't recognize the format.

The solution: after connecting, find the mobile storage and format again with FAT or FAT16 format.



◆ Problem Solution

Warning:

1. We strongly suggest users to install the player management software first and format after that. And in win98, first install the management software, then connect the player to recognize device.

2. During transfer process, the speed shown in the computer is different because of the difference of win 98, win 2000 and win XP. So the speed should be according to the player. The transfer speed of the player is shown with animation. The stopping of animation means the end of transfer.

Plug and play function is only for Win2000, Win XP while Win98 and Win98 Se has not the function and need users to install the driver. The management system contain the driver, so you only need to install the management system.

3. Press the Play button to get no reaction on the player.

The reason and the solution: there is no battery or the power is used up. Check whether there is battery or replace the battery. Take out the battery, and after 5 seconds, install it correctly again.

4. After opening the player, press the button to get no reaction. The reason and the solution: the button is locked. Press the Hold button to unlock.

5. After connection, the mobile storage icon of the player can't be found.

The reason and the solution: you may not install the player management software, or the application has been corrupted. Install the application again. Or the mainboard has no USB port. And please contact the mainboard agent to upgrade your mainboard.



6. The time is shown in a mess when some music is played. The reason and the solution: the mp3 files compressed with the VBR format will cause the time change in playing because the change of rate. But playing is no problem. You can compress them with the fixed rate format to solve the time problem.

7. Why does to up-plug the player sometimes bring out abnormality of the computer.

The reason and the solution: it's for the plugging or up-plugging of the USB. So we suggest users not to up-plug the USB while transferring to avoid the abnormality.

8. The music format supported: MPEG I Layer 3, MPEG I Layer2, MPEG I Layer 1, MPEG2 Layer3, MPEG2.5 Layer3, WMA.

The rate range of MP3: 32Kbps~256Kbps

The rate range of WMA: 64 Kbps~192Kbps

So if the player can't play normally, the response of pressing button is slow and the earphone is not normal, the compressed format may be not supported by the system or the rate is beyond the above range.

When you meet such situation, please delete the music or compress the music according the standard with some tools again.

Tip: take use of the play media (such as Winamp) to confirm the format of the music after connecting the player with PC. View the information to get the format.

9. Why is the general memory shown and claimed in fact not the same?

The reason and the solution: because the player need space to store application and Chinese character library. So the memory shown is smaller than the actual.



10. Why do the preferences often lose?

The reason: because we often save preferences in Setting.dat. If you delete the file or format the player, these preference will lose. So you need to set again.

**◆ Technical Specifications**

Memory	64/128/256/512M(Build inside)
Battery	An AAA lithium battery
LCD	96*32 pixels, blue backlight
Dimensions	70mm*37mm*23mm
Signal/noise	90dB
Earphone output	5mW+5mW
Frequency range	20Hz-20kHz
Record sampling frequency	8KHZ
Music format	MP3, WMA
Record format	ADPCM MP3 (Line-in)
Language library	GB2312
Compressed rate	32kbps-256kbps